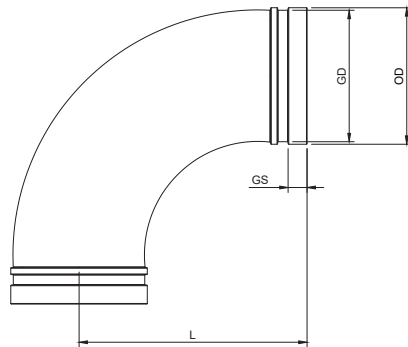


Size range: 2½" - 10"



Grooved long radius elbows provide an economical and efficient method of changing direction in grooved piping systems.

Reference		Nominal size		Pipe Ø O.D.	Grooved long elbow 90° dimensions			Weight	Marking
Red	Galva	NPS inch	DN mm	mm	L mm	GD mm	GS mm	kg	
GBL90R	GBL90G	2½	65	76,1	95	72,3	15,9	1,35	GBLX90
GBL90R	GBL90G	3	80	88,9	108	84,9	15,9	1,50	GBLX90
GBL90R	GBL90G	4	100	114,3	127	110,1	15,9	2,36	GBLX90
GBL90R	GBL90G	5	125	139,7	140	135,5	15,9	4,08	GBLX90
GBL90R	GBL90G	6	150	168,3	165	164	15,9	6,30	GBLX90
GBL90R	GBL90G	8	200	219,1	197	214,4	19,1	10,10	GBLX90
GBL90R	GBL90G	10	250	273,0	229	268,3	19,1	23,20	GBLX90

Material specifications

Housing: ductile iron conform to ASTM A536 GR 65-45-12.

Coating:

- Red paint coating RAL 3000, EPD epoxy coating (any other colour on request).
- Hot dip galvanised.

Working pressure

Working pressure equivalent to the connecting couplings.

Approvals

- FM approved.
- UL listed.

GENERAL INFO

- Installers should be trained or experienced to install and understand the product.
- Before installation, carefully check the product on any damage during shipment or handling.
- Read and understand all technical datasheets and installation instructions before attempting to install, remove or adjust any Profit products.
- Check if the pressure rating of the product is compatible with the service conditions.
- Depressurise and drain the sprinkler installation system before attempting to install, remove or adjust any Profit products.
- Never work on piping systems that are pressurised and / or filled with water or pressurized air.
- Piping Logistics reserves the right to change specifications, designs and / or standard equipment without notice and without incurring in any obligations.
- Use the necessary Personal Protection Equipment (PPE) to avoid personal injury (helmet, safety shoes, goggles and gloves).



- Profit paint coated products are intended for piping with category C1 and C2 environment (indoor). For installations in category C3 we advise the use of our hot dip galvanised couplings and fittings. For application in corrosivity category C4 (higher salinity climate) or higher, please contact info@pipinglogistics.eu. (Classification according to ISO 9223)
- Pressure ratings listed for fire sprinkler applications are CWP (cold working pressure) or MWP (maximum working pressure) at a maximum service temperature of 66°C. This rating may occasionally differ from maximum working pressure listed and / or approved by UL and / or FM, as testing conditions and test pipes can differ. For more information, please contact info@pipinglogistics.eu.
- Maximum working pressure listed is the total of internal and external pressures based on standard weight (ANSI) steel pipe and standard roll or cut groove in accordance with Profit specifications. For more information, please contact info@pipinglogistics.eu.
- For more information on allowed pressures and temperatures related to HVAC applications please contact info@pipinglogistics.eu.
- For a onetime commissioning test only, the maximum joint working pressure may be increased to 150% of the working pressure.

Failure to follow these instructions could result in property damage, serious injury or death.

Our product must always be stored in closed and dry environments. Once installed on an above ground sprinkler system, they require no specific maintenance.

REVISION TABLE

Date	△	Notes
03/12/2025		Initial release.
18/05/2026	A	Page 1 - The approvals have been added.